

Bulletin 802M (2-circuit Standard) and 802MC (2-circuit Corrosion Resistant) Limit Switch

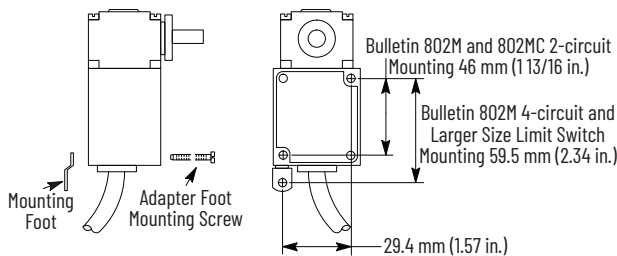
Bulletin Number 802M and 802MC

Mounting

Two clearance holes for #10 screws are provided for front mounting. The adapter foot that is included with the two-circuit standard version can be used when it is desired to mount the switch to the dimensions of a four-circuit and other larger size limit switches. Place the adapter foot end with the tapped hole into the rectangular recess at the lower rear corner of the switch and securely tighten (approximately 3.61 N•m (32 lb•in.) the adapter foot with the mounting screw provided. Verify that the exposed end of the adapter foot is flush with the rear surface of the switch (see [Figure 1](#)).

To be compatible with the exposed metal parts of the corrosion-resistant version (Bulletin 802MC), use Type 316 stainless steel mounting hardware.

Figure 1 - Switch Mounting



Wiring

IMPORTANT The contacts in each switching element must be wired with the same polarity.

Bulletin 802M and Bulletin 802MC limit switches are pre-wired and factory sealed. See the wiring diagram on nameplate for proper circuit connection.

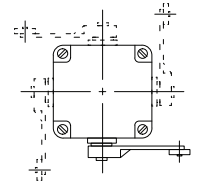
The status indicator is pre-wired and permanently sealed; the light-emitting diode (LED) cannot be replaced.

Optional wiring formats: Some switches may be equipped with a mini-type male connector. If the mating cord (not supplied by Rockwell Automation) contains a green lead, it should be permanently reidentified with a color other than green to guard against its use as an equipment grounding conductor. See the wiring diagram on nameplate for proper circuit connection.

Some switches may be equipped with 24V DC (Red) status indicators. One side of the light is wired to either the normally open (LF) or the normally closed (LC) contacts. The other side of the status indicator is available through an extra cable lead or mini-type connector pin. This permits wiring of the indicating light with the load controlled by the limit switch. See the wiring diagram on nameplate for proper circuit connection.

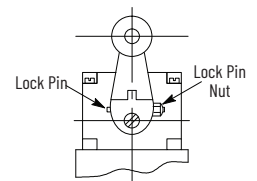
Actuator Head Position

All actuator head styles may be placed in any of four positions on the switch body. Loosen the four captive head screws, place the head in the desired position, and securely retighten (approximately 1.24 N•m (11 lb•in.) the four screws.



Lever Position

The lever that is used with rotary actuated devices is adjustable to any position through 360° around the shaft. Loosen the lock pin nut, move the lever to the desired position, and securely retighten the lock pin nut. See rockwellautomation.com/en-us/products/hardware/allen-bradley/sensors-and-switches/limit-switches/heavy-duty-limit-switches/802m-factory-sealed.html for a complete selection of operating levels.

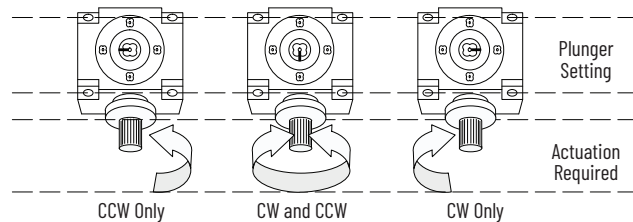


Change Direction of Actuation

The switch action of spring return, rotary actuated devices can be set to operate with clockwise only, counterclockwise only, or clockwise and counterclockwise shaft movement.

To change the direction of actuation, follow these steps:

1. Loosen the four head mounting screws and remove the operating head from the switch body.
2. Locate the plunger on the underside of the operating head.
3. Pull the plunger outward and rotate it in steps of 90° to provide the operating mode desired. The respective settings are as follows:



4. Verify that the plunger is pushed back inward before the operating head is reattached to the switch body.
5. Securely retighten (approximately 1.24 N•m [11 lb•in.]) the operating head mounting screws.
6. Check for desired actuation mode.

Renewal Parts

The switch body or operating head may be ordered as a renewal part. Order by catalog number and series letter as it appears on the nameplate of that part. Make sure rubber sealing ring, provided with switch body, is properly installed between switch body and operating head.

Specifications

Attribute	Value
Electrical ratings	Two-circuit, NEMA R300 with cable, NEMA R150 with mini-type receptacle option, 24V DC with LF or LC indicating light option
Enclosure types	<ul style="list-style-type: none"> Bulletin 802M (standard) 1, 4, 6P, 13 Bulletin 802MC (corrosion-resistant) 1, 4, 4X, 6P, 13
Operating temperature	0...82.2 °C (32...180 °F)
Storage temperature	-40...+82.2°C (-40...+180 °F)

IMPORTANT Temperature range below 0 °C (32 °F) is based on the absence of freezing moisture or water.

Interchangeability

Use these Limit Switch body only catalog numbers	With or without any of the following suffix letters	May be used in combination with any of the following factory or field installed operating head catalog numbers	
802M-XY5...802M-XY99 802M-XZY5...802M-XZY9 802M-XZJ1...802M-XZJ9	LF LC L1F L1C	802M-AX 802M-A1X 802M-A2X 802M-AMX 802M-BX 802M-BAX	802M-CX 802M-CAX 802M-DX 802M-HX 802M-H2X 802M-KX
802MC-XY5...802MC-XY99 802MC-XZ5...802MC-XZY99 802MC-XZJ...802MC-XZJ9	LF LC L1F L1C	802MC-AX 802MC-A1X 802MC-A2X	

Waste Electrical and Electronic Equipment (WEEE)







At the end of life, this equipment should be collected separately from any unsorted municipal waste.

Rockwell Automation maintains current product environmental compliance information on its website at rok.auto/pec.

Your comments help us serve your documentation needs better. If you have any suggestions on how to improve our content, complete the form at rok.auto/docfeedback.

For technical support, visit rok.auto/support.

Rockwell Otomasyon Ticaret A.Ş. Kar Plaza İş Merkezi E Blok Kat:6 34752, İçerenköy, İstanbul, Tel: +90 (216) 5698400 EEE Yönetmeliğine Uygundur

Connect with us.    

rockwellautomation.com

expanding **human possibility**[™]

AMERICAS: Rockwell Automation, 1201 South Second Street, Milwaukee, WI 53204-2496 USA, Tel: (1) 414.382.2000, Fax: (1) 414.382.4444

EUROPE/MIDDLE EAST/AFRICA: Rockwell Automation NV, Pegasus Park, De Kleetlaan 12a, 1831 Diegem, Belgium, Tel: (32) 2 663 0600, Fax: (32) 2 663 0640

ASIA PACIFIC: Rockwell Automation, Level 14, Core F, Cyberport 3, 100 Cyberport Road, Hong Kong, Tel: (852) 2887 4788, Fax: (852) 2508 1846

Allen-Bradley, expanding human possibility, and Rockwell Automation are trademarks of Rockwell Automation, Inc. Trademarks not belonging to Rockwell Automation are property of their respective companies.

Publication 802M-IN002B-EN-P - April 2021 | Supersedes Publication 802M-IN002A-EN-P - August 2001

Copyright © 2021 Rockwell Automation, Inc. All rights reserved. Printed in the U.S.A.



40060-358-01

40060-358-01 Ver 12